

THE NIA ALLIANCE NEWSLETTER

MAY 2011

Volume 5, Issue 1

The Ashe Women's Center

There has been plenty of activity at the Ashe Women's Center since our open house on April 24th. In addition to hosting tours for colleagues and members of Mt Aery Baptist Church, we launched a monthly "Chat & Chew" series, hosted by Lisa Cruz of Bristol Myers-Squibb. For Mother's Day, we also hosted a Mother's Day Breakfast. Each of the events were well received by the women in the community.

About the Ashe Women's Center. We are located at 105 Frank St in a 9 room house. As of today, we have totally remodeled and occupy the first floor, which includes a large foyer for greeting clients and guests, as well as displaying literature. We also have two great rooms, one for meetings and the other intended for informal gatherings. Last but never least, we have a full size kitchen and bath on this level. If you know Nia, we plan to put the kitchen to good use!

With all of this great space, we intend to expand our services to realize Nancy's vision to become "a place of healing for women", in which we are truly on our way to becoming by the Grace of God.

Below is a short summary of upcoming programs and events to hosted and offered at the Ashe Women's Center.

Monthly Program Offerings

Sacred Women - monthly support group for women who are touched by HIV. The mission of Sacred Women is to bring women together who are living with HIV/AIDS to offer support for matters of the heart; as well as offer HIV educational seminars, health information and other supportive services. This group meets on the 4th Saturday of the month and is facilitated by Rev Peggy Hill and Linda Robinson.

Monthly Women's Recovery Group - monthly support group for women 18 and older who are in active or early addiction recovery. The mission of this support group is to address the intersection of substance abuse and HIV. This group will meet on the 3rd Tuesday of the month and is facilitated by Rev Tucker and Fran Hayes.

Chat & Chew, hosted by Lisa Cruz of Bristol Myers-Squibb will address topics of interest for female consumers and caregivers. This series will be held on the 2nd Tuesday of each month from 11:30am-1:30pm and will include a full lunch. This series is sponsored by Bristol Myers-Squibb. June's topic will be 'Mental Health Topic: Taking Care of Your Emotional Health'.

Dinner and a Movie night. One Friday night a month we will enjoy a good movie, dinner and each other's company. This evening is intended to build and develop a sense of sisterhood and community.

Continued on next page

INSIDE THIS ISSUE:

Ashe Women's Center	1
Ashe Women's Center Cont'd	2
Red Night Out—Reflections	3
Caribbean Day Event	4
Dinner and a Movie	5
EVENT CALENDAR	6
RESOURCES: WHERE TO FIND IT	7
ABOUT NIA	8

The Ashe Women's Center, Continued

Upcoming Events at the Ashe Women's Center:

Join us Saturday, June 4th for our 2nd Annual National Caribbean-American where we will celebrate Caribbean people and their culture as we educate them on topics related to HIV, We will have a hot Jamaican lunch, beverages and desserts. Workshops to include HIV 101 and Stigma. There will be music, raffles and tons of fun for the entire family.

Girls' Night Out! July 8th - more details to come, but expect to have a good time with your sistas!

You can check our website (www.niaalliance.com) for more details regarding each of the monthly sessions as well as the upcoming events. Confidential Rapid HIV testing will be available at each event.

The Nia Alliance has been blessed with the Ashe Women's Center and wishes to thank the following people and organization:

Reverend Dr. Anthony L. Bennett of the Mt Aery Baptist Church
Mr. Paul Mendes and the Board members of the Mt Aery Development Corporation
The Trustees of the Mt Aery Baptist Church
Bob's Discount Furniture for their furniture donation
Ms. Upchurch, member of the Mt Aery Baptist Church
Mr. Jimmy Small
The Nia Alliance Core Leadership team

Welcome

The Nia Alliance and the Ashe Women's Center welcomes volunteers, Ebony Hamilton and Fran Haynes to the team.

Ebony will volunteer one Saturday a month and will assist us with events, planning and promotion. Fran will assist Rev Tucker with the monthly recovery support group.

Both women have a wealth of education and experience in their respective careers. Fran is also a graduate of the Nia Alliance.

As we expand our scope of services, we are very appreciative of the additional support and the interest in Nia and Ashe.

*Red Night Out Benefit - Reflections from LaJeune Pollard, 2nd Cohort***RED NIGHT OUT**  BENEFIT

The Greater Bridgeport HIV/AIDS Care Consortium hosted a successful fundraiser “**RED NIGHT OUT**” at the Stratford Ramada Inn, 225 Lordship Blvd., Friday evening, May 20th 2011, 7 pm - midnight to benefit the client emergency fund which provides services to people impacted by HIV/AIDS with housing, electric, medical and funeral expenses.

There was a large, diverse sea of people dressed in red ergo “**RED NIGHT OUT**” showing their support.

Ralph Muniz and Mildred Green, co-chairs of the consortium, provided the welcome address, Awilda Gonzales prayed for healing and for the battle that we face each and every day in the fight against HIV/AIDS and NIA’s own LaJeune Pollard (2nd cohort), was the Mistress of Ceremonies for the evening. There was plenty of good food, while music for all ages and cultures was provided by DJ KC; there was also mime, song, spoken word and rap performances, as well as a AIDS quilt slideshow that ran throughout the event. Additionally, there were vendors who showed support.

A highlight of the evening was the silent auction that included artwork, designer jewelry, gift baskets and raffles from local artists and businesses who donated their wares for this great cause.

There were several GBHC agencies represented as well as the community at large.

“**RED NIGHT OUT**” was the first fundraiser planned for 2011 to help those impacted by HIV/AIDS. GBHC’s next fundraiser is the 22nd Annual AIDS Walk on Saturday August 20, 2011 at Seaside Park (Band Shell). Registration begins at 9 AM walk will kick-off at 10AM with entertainment following the walk. (Rain date August 27, 2011.)

“**RED NIGHT OUT**” was truly a labor of love. On behalf of the community and the planning committee, lead by Latisha Broadus, Betty Lord and LaJeune Pollard, we would like to thank you for your generosity. Hope to see you there next year!



**The Ashe' Faith Project
Invites you**

To

**2ND ANNUAL NATIONAL CARIBBEAN-AMERICAN
HIV/AIDS AWARENESS DAY**

Saturday, June 4, 2011 @ 10am



**EDUCATIONAL
WORSHIP
FUN**

**WORKSHOPS
FOOD
RAFFLES**

FREE CONFIDENTIAL HIV TESTING

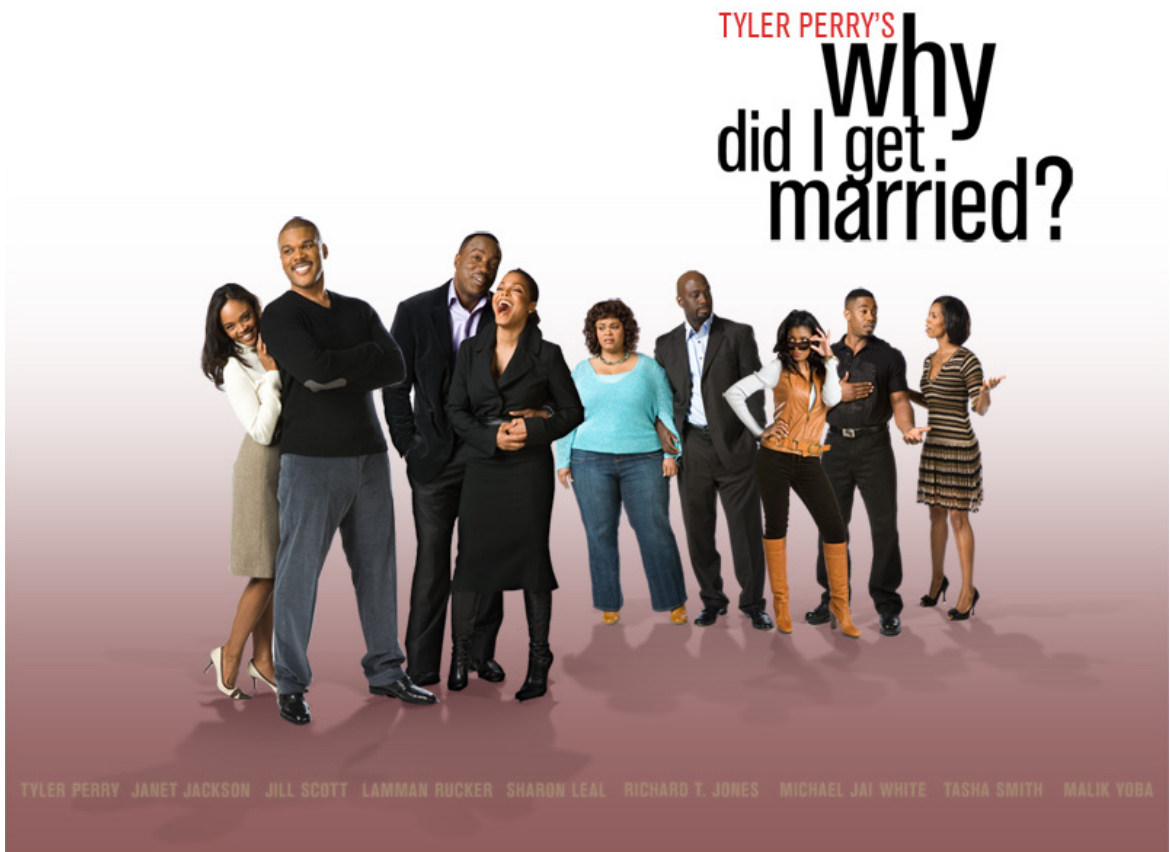
**ASHE WOMEN'S CENTER
Dr. Anthony L. Bennett Sr. Pastor
105 Frank Street, Bridgeport, CT 06604**

"A UNITED COMMUNITY IS A FORCE OF POWER"

This Event is sponsored by the Ashe' Faith Project of Mount Aery Development Corporation
funded by the Center for Substance Abuse and Prevention. For more information call (203) 870-0761.

DINNER AND A MOVIE

LADIES, PLEASE JOIN US FOR OUR FEATURE PRESENTATION:



FRIDAY, JUNE 17, 2011 @ 6PM

ASHE WOMEN'S CENTER
105 FRANK STREET, BRIDGEPORT, CT 06604
203-870-0761 ~ WWW.NIAALLIANCE.COM

THIS EVENT IS FREE AND OPEN TO THE PUBLIC. LADIES ONLY, PLEASE.

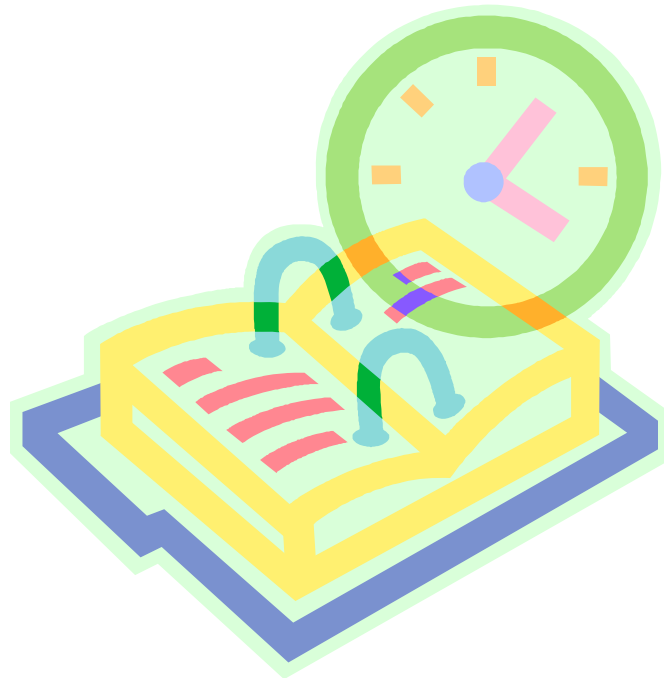
EVENT CALENDAR

The Ashe Faith Project is Moving - UPDATE!

Sometimes the renewal process takes a little longer!

Some of us can attest to this fact.
As such, our Open House for the *ASHE WOMEN'S CENTER*
has been postponed.

We will make another announcement when we're ready for the big reveal.



Access our calendar below for information regarding our upcoming events.
Please come out and support the community as your calendars permit!

For more information regarding our upcoming events, please bookmark the following web address: <http://niaalliance.com/Events.html>

If you're aware of a community or faith based event and would like to add it to the calendar, please submit the following information to newsletter@niaalliance.com

- ◇ Event Name
- ◇ Point of Contact
- ◇ Date and time of Event
- ◇ Description of Event

RESOURCES: WHERE TO FIND IT...

Need HIV, STD or statistical info and not sure where to find it?
See the list of resources below.

FREE LOCAL HIV TESTING LOCATIONS

Ashe Women's Center
105 Frank St, Bridgeport, CT 06604
Hours: Monday-Wednesday, 10am-2pm
Thursday, 3pm-7pm
Fridays by appointment only
203-870-0761

GBAPP
158 Mill Hill Ave, Bridgeport, CT 06604
Hours: Mon-Fri., 9am-5pm
203- 384-3629

Optimus Health Care Incorporated
982 East Main St, Bridgeport, CT 06608
Hours: Mon-Fri., 9am-5pm
203-696-0085

Southwest Community Health Center
361 Bird St, Bridgeport, CT 06605
Hours: Mon-Fri., 8:30am-5pm
203-330-6000

Yale-New Haven Hospital (AIDS Care Program)
20 York St, New Haven, CT 066511
Hours: Mon., 9am-3pm; Tues., Thurs., Fri., 8:30am-5pm; Wed., 9:30am-3pm
203-688-3298

Norwalk Health Department
137 East Ave, Norwalk, CT 06851
Hours: Mon-Fri., 9am-5pm

Other Related Information:

Local Stats: CT Department of Public Health (DPH)
<http://www.ct.gov/dph/cwp/view.asp?a=3135&q=393048>

National Stats: Center for Disease Control and Prevention (CDC)
<http://www.cdc.gov/hiv/topics/surveillance/resources/reports/index.htm>

STD info: Fact Sheets, Statistics, STD testing Sites, etc:
<http://www.cdc.gov/std/default.htm>

Substance Abuse: Treatment facilities, etc:
<http://www.ct.gov/DMHAS/site/default.asp>

2-1-1: referral services for the entire state of CT:
<http://www.infoline.org/>

**REFERRAL
SOURCES:**

**TESTING
SITES,
STATISTICS,
ETC...**

ABOUT NIA

THE NIA ALLIANCE

MADC
72 George Street
Bridgeport, CT 06604
Tel: 203-870-0761
www.niaalliance.com

The Nia Alliance is an initiative with the goal to develop a volunteer network of men and women who are dedicated to learn and respond to the growing HIV epidemic among women of color. In August 2006, Nancy Kingwood, *MSHS, CHIVC* developed a training curriculum to prepare men and women of color to serve as volunteer liaisons to faith-based organization. Objectives for participants completing the training workshop are 1) enhance knowledge of HIV, 2) develop skills to engage peers in HIV-related services, and 3) serve as community liaisons and planning body for HIV awareness events sponsored by the Nia Alliance.

NIA ALLIANCE MISSION STATEMENT

The Nia Alliance is a community mobilization initiative dedicated to equip people of African descent to respond effectively and emphatically to the AIDS epidemic in communities of color through education, advocacy, direct services and community collaboration. Grounded in faith, we recognize the importance of being inclusive and nonjudgmental as we empower our participants to make informed decisions.

The Ashe HIV Faith Project

funded by the Substance Abuse Mental Health Service Administration's Center for Substance Abuse Prevention Faith and Community Based Support Initiative

The Ashe Faith Project aims to reduce substance abuse and HIV/AIDS in communities of color by strengthening the partnerships between local community organizations and faith groups, utilizing a wealth of knowledge, experience and passion to maximize local synergies, promote program collaboration, and encourage service integration.

For more information regarding the Nia Alliance, please contact:

Contact: Nancy Kingwood, MSHS, CHIVC

Project Director

Mount Aery Development Corporation (MADC)

72 George Street

Bridgeport, CT. 06604

Tel: (203) 870-0761

Fax: (203) 394-9957

Email: ashefaithmadc@yahoo.com

**Would you like to
contribute to the
newsletter?**

Please email your article,
event, pictures, etc to
newsletter@niaalliance.com
by the 10th of each month.

